



# Tank and duct cleaning options

---



# Cleaning efficiency classes

Cleaning efficiency class 1

RINSING

Cleaning efficiency class 2

Cleaning efficiency class 3

LIGHT TO  
MEDIUM SOIL

Cleaning efficiency class 4

Cleaning efficiency class 5

PERSISTENT  
SOIL

Static spray nozzles  
1.5-2.0 Bar  
0.5-> 5.0 metre range

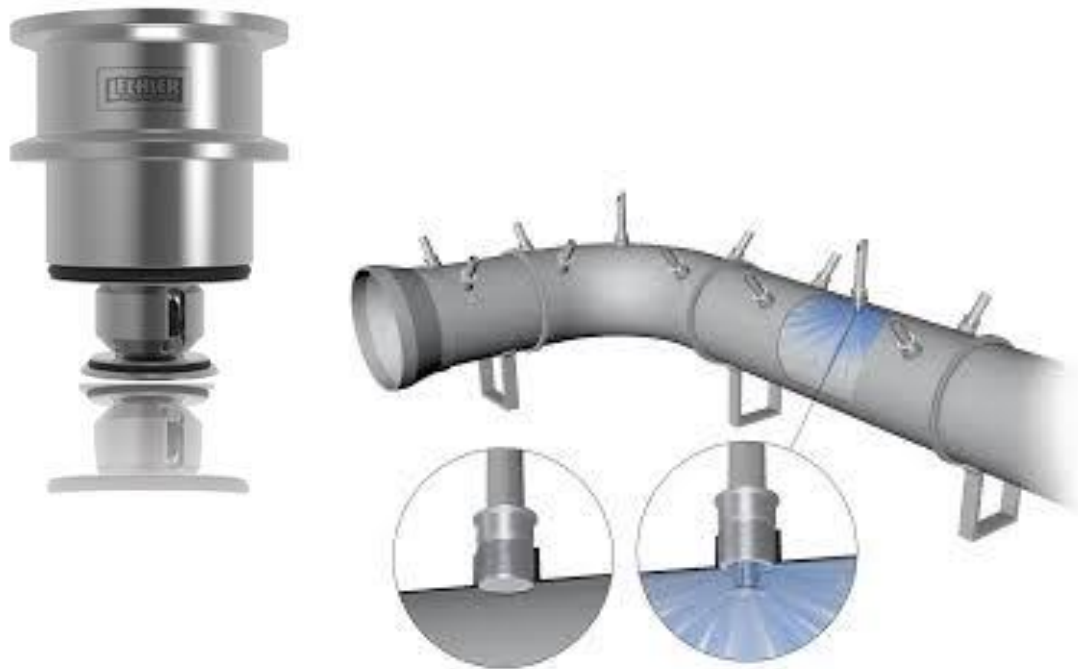
Rotating nozzles  
2.0-> 5.0 Bar  
0.5-24 metre range

# Cleaning efficiency 1



- Rinse applications where the product comes away easily
- SS316 or C22 static spray balls
- Range from small to medium size vessels
- Higher flow of CIP required
- 1.5 Bar to 2.0 Bar normal operating range
- Screwed, slip on or welded connections
- Range from 0.5 to 5.0 metre throw
- 180° 270° 360° Patterns

# Cleaning efficiency 2 - Duct cleaning



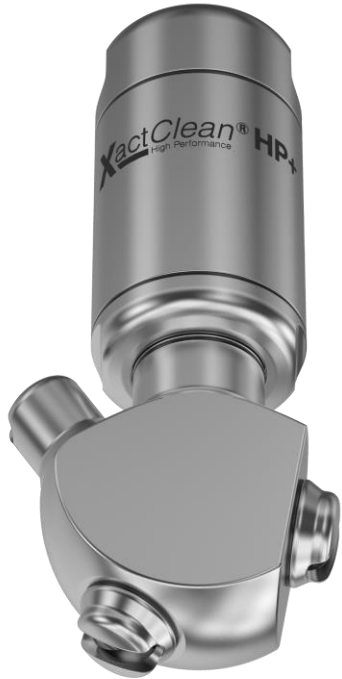
- Rinse applications where the product comes away easily or light soiling
- Teflon Rotating head with 60° spray pattern
- Activates with +1.0 Bar pressure
- 2.0 Bar normal operating range
- Connection options connections
- Range from 0.5 to 1.5 metre throw

# Cleaning efficiency 3



- Impact clean applications where the product comes away with light to medium soiling
- SS316 rotating head
- ATEX options
- Range from small to medium size vessels
- Low flow of CIP required
- 2.0 Bar to 3.0 Bar normal operating range
- Connection options
- Range from 0.5 to 2.5 metre throw
- 360° Patterns

# Cleaning efficiency 4



- Strong impact clean applications where the product comes away with medium to difficult soiling
- SS316 Rotating head
- ATEX option
- Range from medium to large vessels
- Lower flow of CIP required
- 5 Bar normal operating range
- Connection options
- Range from 6 to 10 metre throw
- 360° Patterns

# Cleaning efficiency 5

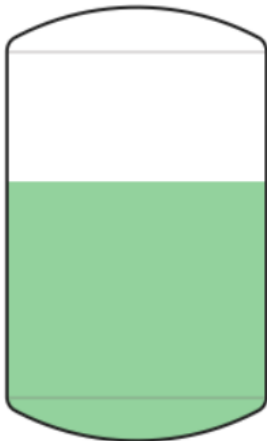


- Very strong impact clean applications where the product comes away with difficult or stubborn soiling
- SS316 Rotating head
- ATEX option
- Range from medium to large vessels
- Lower flow of CIP required
- 5 Bar normal operating range
- Connection options
- Range 12-24 metre throw
- 360° Patterns

# Information needed

Filled Volume	2.4752	m <sup>3</sup>
Total Volume	4.0810	m <sup>3</sup>
Inside Dish Depth (a)	254.01	mm
Dish Radius (rD)	1500.00	mm
Knuckle Radius (kD)	90.00	mm

Sketch



- Tank diameter & shell
- Agitator or baffles in the vessel
- Materials of construction
- Product being cleaned
- Available pressure and CIP flow
- Angle of cleaning preferred (180° 270° 360° Patterns)
- Type of connection



# Queries & Contacts



**Michael Bradley –  
Commercial Manager &  
Process equipment  
specialist**

**086 0476178**

[Michael.Bradley@flexachem.com](mailto:Michael.Bradley@flexachem.com)



**Ross O'Donovan –  
Product Specialist**

**021 4617230**

[Ross.odonovan@flexachem.com](mailto:Ross.odonovan@flexachem.com)