











# Aseptic O-Ring fittings

## FEMALE BLIND COVER

### Standards

According to aseptic standards with tube according to ISO 1127 / DIN 11850

### Material

Stainless Steel 1.4435 BN2 (Fe < 0,5%) according to EN 10088-1

### Sterilization temperature

150°C

### Application

Pharmaceutical and biotechnology industries

### Type of Construction / Surface quality

- Outer surface: Ra < 0,8 µm
- Inner surface: Ra < 0,4 µm

### Hygienic tube class

H 3 / H 4 according to DIN 11866

### Marking

Dimension, material, casting number, manufacturer

### Certificates

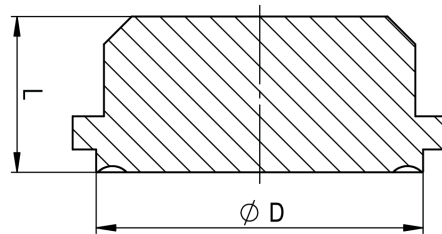
Certificate according to EN 10204-3.1

### Option

- Electropolishing (EP)
- Other sizes available on request

### Remarks

Technical changes reserved



### DIMENSIONS OF FEMALE BLIND COVER

DIMENSION	L (mm)	D (mm)	Item No.
<b>According to ISO 1127</b>			
ISO DN 8	12,00	15,10	120.I-008.BBD.XX
ISO DN 10	14,00	19,90	120.I-010.BBD.XX
ISO DN 15	14,00	23,90	120.I-015.BBD.XX
ISO DN 20	14,00	29,40	120.I-020.BBD.XX
ISO DN 25	14,00	35,60	120.I-025.BBD.XX
ISO DN 32	17,00	44,25	120.I-032.BBD.XX
ISO DN 40	17,00	50,20	120.I-040.BBD.XX
ISO DN 50	17,00	61,15	120.I-050.BBD.XX
<b>According to DIN 11850</b>			
DIN DN 4	12,00	7,90	120.D-004.BBD.XX
DIN DN 6	12,00	10,90	120.D-006.BBD.XX
DIN DN 8	12,00	12,90	120.D-008.BBD.XX
DIN DN 10	12,00	14,90	120.D-010.BBD.XX
<b>.XX = EP, Electropolishing</b>			



# MALE BLIND COVER

### Standards

Accor~~KP~~~~U~~~~GR~~~~KE~~~~U~~~~OP~~~~ET~~~~B~~~~K~~~~W~~~~G~~~~CE~~~~E~~~~K~~~~P~~~~D~~  
&

### Material

~~3~~~~K~~~~P~~~~U~~~~U~~~~B~~~~G~~~~G~~~~C~~~~E~~~~E~~~~K~~~~P~~~~D~~

### Sterilization temperature

0%

### Application

Pharmaceutical and biotechnology industries

### Type of Construction / Surface quality

1~~W~~~~T~~~~U~~~~W~~~~T~~~~E~~~~G~~~~4~~~~C~~~~I~~~~0~~  
R~~P~~~~G~~~~T~~~~U~~~~W~~~~T~~~~E~~~~G~~~~4~~~~C~~~~I~~~~0~~

### Hygienic tube class

~~C~~~~E~~~~E~~~~K~~~~P~~~~D~~

### Marking

~~3~~~~O~~~~G~~~~P~~~~U~~~~K~~~~E~~~~D~~~~O~~~~C~~~~K~~~~C~~~~E~~~~C~~~~U~~~~K~~~~P~~~~P~~~~W~~~~O~~~~D~~~~T~~~~O~~~~C~~~~P~~~~W~~~~E~~~~E~~~~W~~~~T~~~~G~~~~T~~

### PE

~~3~~~~T~~~~K~~~~E~~~~C~~~~C~~~~E~~~~E~~~~K~~~~P~~~~D~~

### Option

~~3~~~~E~~~~V~~~~R~~~~K~~~~U~~~~K~~~~P~~~~D~~

- Other sizes available on request

### Remarks

Technical changes reserved

## DIMENSIONS OF FEMALE BLIND COVER

DIMENSION	D		L (mm)	Item No.
According to ISO 1127				
<del>5</del> <del>1</del> <del>0</del>	8	Z	13,00	<del>3</del>
<del>5</del> <del>0</del>	10	Z	14,00	<del>3</del>
<del>5</del> <del>0</del>		M 30 x 2.0		<del>3</del>
<del>5</del> <del>0</del>	20	M 36 x 2.0		<del>3</del>
<del>5</del> <del>0</del>		M 42 x 2.0		<del>3</del>
<del>5</del> <del>0</del>	32	Z	16,00	<del>3</del>
<del>5</del> <del>0</del>	40	Z	16,00	<del>3</del>
<del>5</del> <del>0</del>		M 68 x 2.0	18,00	<del>3</del>
According to DIN 11850				
<del>0</del> <del>0</del>	4	Z	12,00	<del>3</del>
<del>0</del> <del>0</del>	6	Z	12,00	<del>3</del>
<del>0</del> <del>0</del>	8	Z	12,00	<del>3</del>
<del>0</del> <del>0</del>	10	Z	12,00	<del>3</del>
.XX = EP, Electropolishing				