



**IBC Mixers**

---

**for Plastic**

---

**Transportable**

---

**Containers**

---



# IBC Mixers

Chemineer's unique range of industrial agitators are designed for use with plastic transportable (IBC) containers. We supply a range of models suitable for a variety of applications including—blending light viscous liquid as well as re-suspension of settled solids and dissolution of powders.

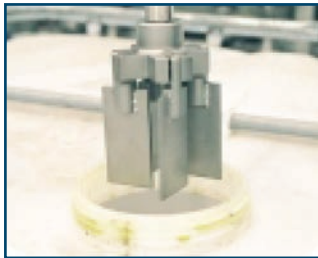
## Applications

- Chemical Industry
- Dye Stuffs & Pigments
- Slurries
- Paint & Varnish
- Food & Beverage
- Water Treatment Chemicals and Flocculants
- Cosmetics Industry

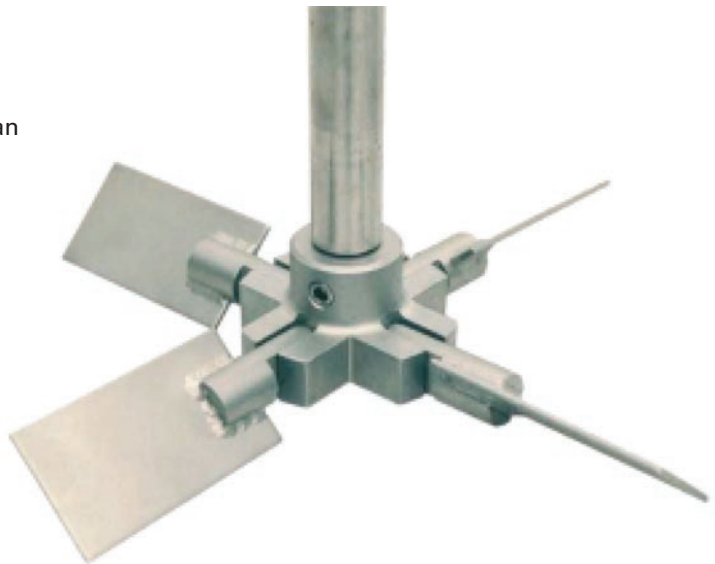


## Container

Designed for use on 1000 / 800 liter IBC containers with 150mm screw caps by Schutz, Sotralentz and Van Leer, suitable for most container types.



*E-400 Folding Impeller  
Closed*



*E-400 Folding Impeller  
Operating*

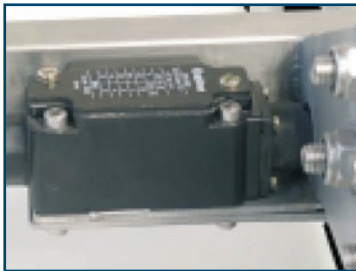
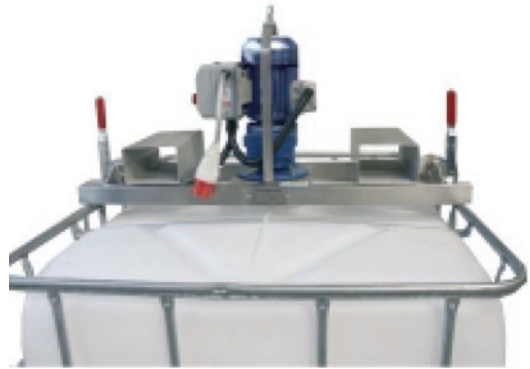
# Technical Specification

## Mixer Support

Lightweight stainless steel bridge which mounts directly onto the IBC frame and is secured in place with quick action toggle clamps.

## Lifting Options

The standard mixer is supplied with an eye bolt for lifting the mixer using a hoist, bolt on modules are also available for lifting the mixer using a fork lift truck.



## Electric Motors

- 400 Volts 3ph 50Hz protection IP55, fitted with Start / Stop push buttons and overload relays.
- Connection to the unit is with a 4 pin, 16 amp plug / socket, a 10 meter steel wire armored flex extension cable is available as an optional extra.
- A safety interlock is integrated into the mixer support bridge and wired to the motor control.

## Air Motors

Are fitted with a flow control valve and muffler.

## Gear Drives

Factory filled with a synthetic food quality lubricant and sealed for life.

## Shaft and Impellers

The mixer shaft and impellers are manufactured in 316 stainless steel. High speed mixers are fitted with single or dual fixed impellers and low speed mixers with E-400 Folding Impellers.

## Models

- HBC — high speed direct drive
- LBC — low speed gear drive
- Motors 0.37 — 1.5 kw electric or air
- Special designs are also available for introducing powders or liquids into the IBC



## Mixer Sizing and Selection

The following tables provide a general selection guide. Our application engineers will be pleased to advise on mixers / agitators suitable for your specific application.

Mild to Medium Agitation 1000 Liter IBC		
Viscosity Cp	Mixer Model	Drive Type
1.0 100	HBC-37	Direct
250 500 1000	LBC-37	Gear
2500 5000	LBC-75	Gear
15000	LBC-150	Gear

Vigorous Agitation 1000 Liter IBC		
Viscosity Cp	Mixer Model	Drive Type
1.0 100 250	HBC-37	Gear
500 1000	LBC-75	Gear
2500 5000	LBC-150	Gear

## Inquiries / Ordering

Please mention container type and size: volume and mixing duty together with viscosity and SG when requesting a quotation or placing an order to enable our application engineers to confirm or propose a suitable IBC mixer selection.

## Check List / Options

- Drive Electric or Air
- Lifting Hoist Standard or Fork Lift Truck
- Extension 10 meter steel wire armored flex fitted with a plug and socket