



# ***Valtek Torex TX Butterfly Valves***



***Experience In Motion***



## Valtek Torex TX

High performance Butterfly Valve. Triple offset Butterfly valve for tight shut-off and to eliminate seat wear. After more than one hundred years of close cooperation with our customers, we at Flowserve know what it is all about. Our robust valve and actuators, together with our advanced positioners, are designed to cope with the demands and control of all types of flowing media. With the focus on performance. Flowserve's products are compact, modular-built, high performance packages that are optimized for exact control and cost-effective continuous operation. They have an extremely long life span as all parts are of highest quality. And they'll still be safe in the future as they use advanced technology and innovative solutions. Flowserve ensures a safe and cost-effective operation for our customers all over the world

## Applications

Valtek Torex TX can be used both as a control valve and as a shut-off valve in a wide variety of applications.

## Industries served

- Chemical industries - General services
- Petrochemical industries - General services
- General industries - Water, Oil and Gas

## Specification

Material	Stainless steel Carbon steel
Sizes	DN 80 - 700 ANSI 3 - 28"
Pressure Rating	PN 10 - 25 ANSI Class 150
End Connections	Wafer type Lug type







## Features

- Triple offset design
- One piece body
- Wafer or lug style
- Bi-directional

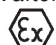
## Options

### Environmental Packing

SafeGuard packing set is an approved, tested and certified packing arrangement with ISO 15848-1.

### ATEX

Valtek Torex TX is certified according to ATEX 94/9/EC in

 II 2 G/D c

## Valtek Positioner options

### Logix 500 Series

Economical compact user friendly digital positioner. With or without communication. Intrinsically safe.



### Logix 3000 Series

Full-featured double acting, high volume digital positioner with HART or Foundation Fieldbus communication. Explosionproof or Intrinsically safe.



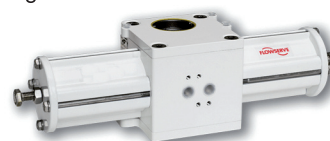
### ValveSight

Predictive diagnostics is available using the ValveSight software available through FDT/DTM technology.

## Actuator package

### Turnex

Heavy duty actuator for high performance control, modified scotch-yoke called linkages system to prevent any back-lash. Available as single- and double acting, fail open or fail close.



### Automax

The R-series scotch yoke heavy-duty actuators provides torques from 1 000 in-lbs to 17 000.

The supernova series Rack and Pinion actuators and offer one compact design for double acting and spring return.



### Valtork

A rotary cylinder actuator in a high pressure compact actuator with high torque and pneumatic stiffness for excellent throttling capacities.





**To find the sales location nearest you visit  
[Flowserve.com/SalesLocator](http://Flowserve.com/SalesLocator)**

For more information about Flowserve Corporation, visit  
[www.flowserve.com](http://www.flowserve.com)

VLEEBR4143-01 06.09

**All data subject to change without notice**

**©06. 2009 Flowserve Corporation. Flowserve and Valtek are trademarks of Flowserve Corporation**

#### **Flowserve Corporation**

Flow Control  
 1350 N. Mt. Springs Parkway  
 Springville, UT 84663  
 USA  
 Phone: +1-801 489 8611  
 Fax: +1-801 489 3719

#### **Flowserve (Austria) GmbH**

Control Valves - Villach Operations  
 Kasernengasse 6  
 9500 Villach  
 Austria  
 Phone: +43 (0) 42 42 41181-0  
 Fax: +43 (0) 42 42 4118150

#### **Flowserve Pte Ltd.**

12 Tuas Avenue 20  
 Republic of Singapore 638824  
 Singapore  
 Phone: (65) 68 798 900  
 Fax: (65) 68 624 940

#### **Flowserve Essen GmbH**

Manderscheidstrasse 19  
 45141 Essen  
 Germany  
 Phone: +49 (0) 201 89 19 5  
 Fax: +49 (0) 201 89 19 662

#### **Flowserve S.A.S.**

7, Avenue de la Libération  
 B.P. 60  
 63307 Thiers Cedex  
 France  
 Phone: +33 (0)4 73 80 42 66  
 Fax: +33 (0)4 73 80 14 24

#### **Flowserve Linköping**

Gelbgjutaregatan 2  
 58187 Linköping  
 Sweden  
 Phone: +46 (0) 13 31 61 00  
 Fax: +46 (0) 13 13 60 54