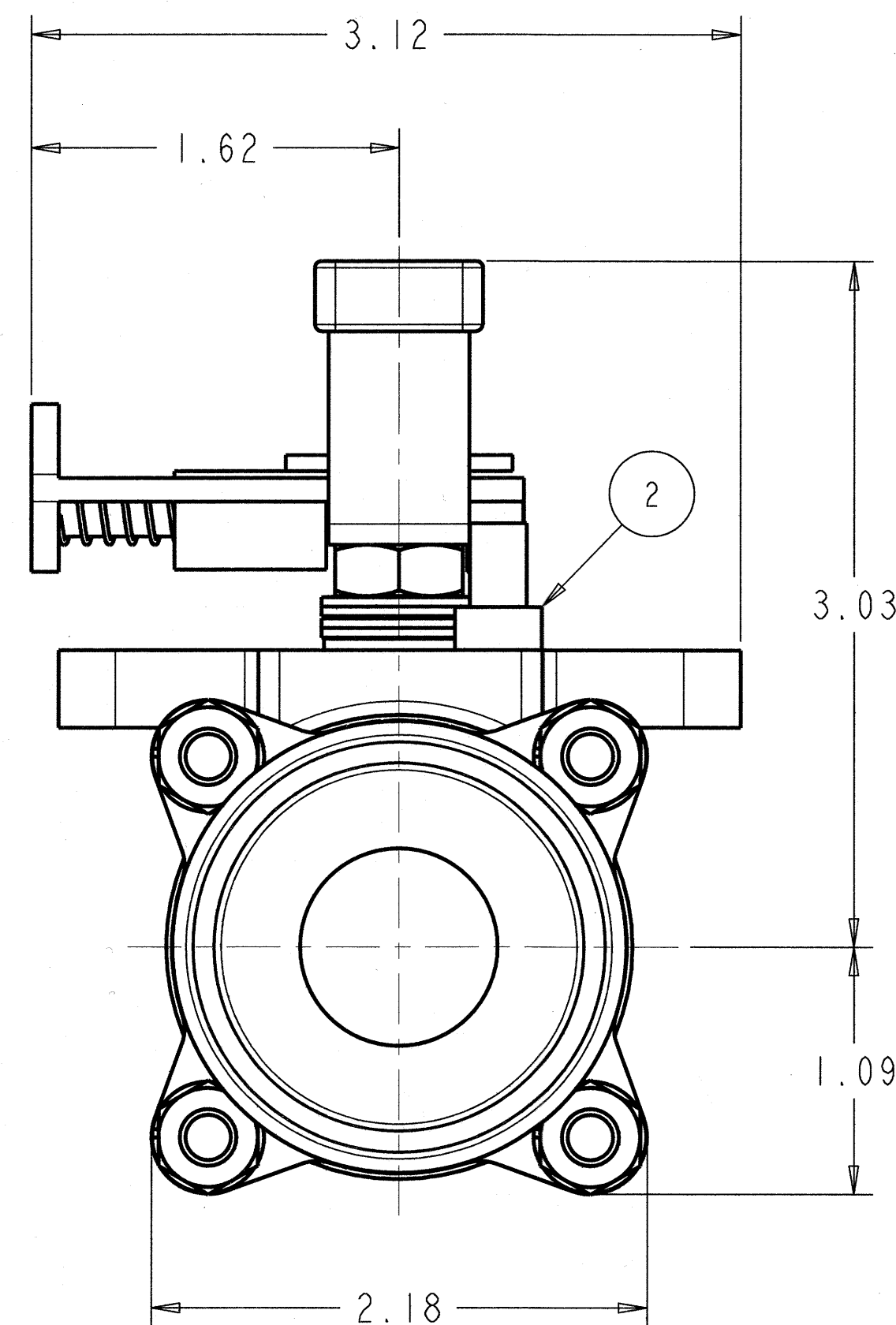
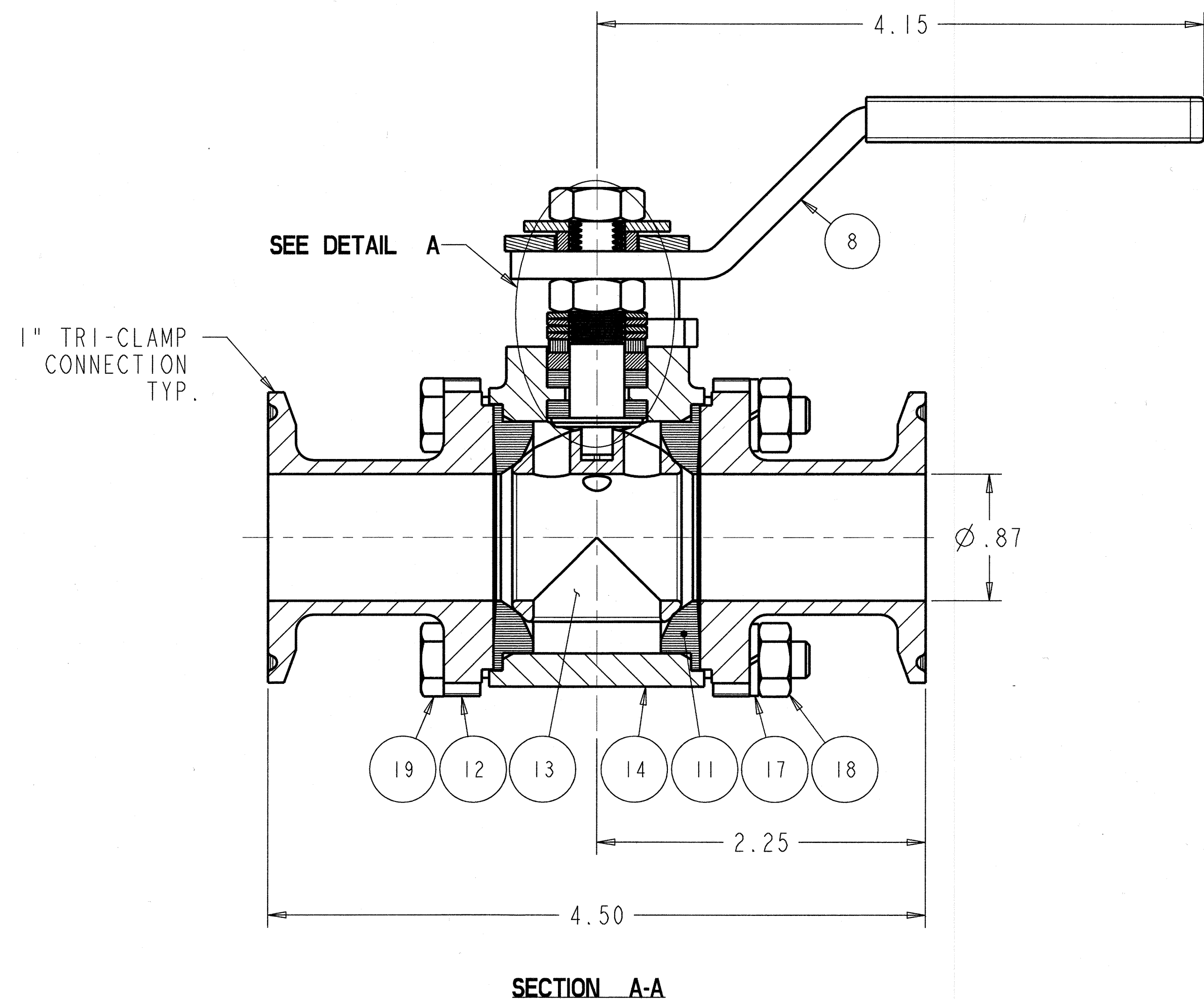
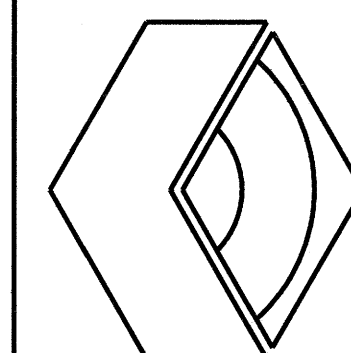


- NOTES:**
- 1.) VALVE SHOWN IN OPEN POSITION.
  - 2.) ALL DIMENSIONS ARE IN INCHES, AND ARE FOR REFERENCE USE ONLY.
  - 3.) FOR MAINTENANCE AND ASSEMBLY PROCEDURES SEE PBM INC. MAINTENANCE INSTRUCTIONS.
  - 4.) DO NOT OVER TIGHTEN BODY BOLTS AS THIS WILL CAUSE HIGH TORQUE, AND DECREASE THE LIFE OF THE SEATS. TIGHTEN BODY BOLTS TO COMPENSATE FOR NORMAL SEAT WEAR (SEE NOTE 3).



PARTS LIST				
ITEM	PART NO.	DESCRIPTION	QTY.	MATERIAL
1	SPTFD509	STEM PACKING	2	VIRGIN TFM
2	SPK-E830	STOP PIN	1	18-8 SST
3	SPK-E504L6	COMPRESSION SPRING	1	STN STL
4	SPK-E110	SPRING WASHER	4	301 SST
5	SPK-D506	FOLLOWER	1	300 SER SST
6	SPK-D504L5	HANDLE LOCK SPACER	1	300 SER SST
7	SPK-D504L4	HANDLE LOCK BAR	1	300 SER SST
8	SPK-D504C--B	HANDLE W/ COVER	1	300 SER SST
9	SPTD509	STEM PACKING	1	S-TEF®
10	SPHLE805	STEM	1	A479, S31603
11	SITFE808	SEAT	2	VIRGIN TFM
12	SIHLE903X-A	END FITTING (20 RA MAX. MECH. I.D. POLISH)	2	A351, CF3M
13	SIHLE902SFA	BALL (20 RA MAX. MECH. I.D. POLISH)	1	316L SST
14	SIHLE901--A	BODY (20 RA MAX. MECH. I.D. POLISH)	1	A351, CF3M
15	HWJKFGXN	HEX NUT (3/8"-24 JAM)	2	18-8 SST
16	HWAKXGXF	FLATWASHER (3/8")	1	18-8 SST
17	HWAKXEXL	LOCKWASHER (1/4")	4	18-8 SST
18	HWAKCEXN	HEX NUT (1/4"-20)	4	18-8 SST
19	HWAKCE24	HEX BOLT (1/4"-20 X 2-1/2" LG.)	4	18-8 SST



**PBM, Inc.**  
1070 Sandy Hill Road  
Irwin Pa. 15642-9409  
Phone: 724-863-0550  
Fax: 724-864-9255

THIS DRAWING CONTAINS CONFIDENTIAL INFORMATION DEEMED BY ITS OWNER, PBM, INC. TO CONSTITUTE TRADE SECRETS. THE DRAWING IS SUBMITTED FOR EVALUATION PURPOSES ONLY AND MAY NOT BE COPIED OR SHOWN TO THIRD PARTIES EXCEPT WITH THE PRIOR WRITTEN CONSENT OF PBM, INC. THIS DRAWING MUST BE RETURNED TO PBM, INC. UPON ITS REQUEST.

**1" SIHLE9, 2-WAY SANITARY BALL VALVE**  
WITH TRI-CLAMP FOR TUBE END CONNECTIONS,  
TFM SEATS & SEALS, SELF FLUSHING BALL,  
20 RA MAX. MECH. I.D. POLISH,  
AND MANUAL LOCKABLE LEVER HANDLE

INIT	DATE	SIZE	FORM NUMBER	REV. NO.	REV.
DR	MDH	12/5/13	D	92021	0
CHK	SAP	12/5/13			
APP	RJA	12/4/13			

SCALE: 1.500 WEIGHT: APPROX. 2.7 lbs. SHEET 1 of 1