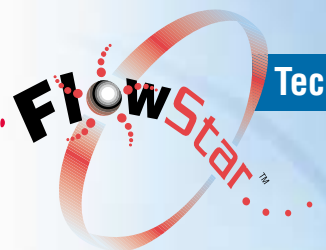


FLOWSERVE



Technology



Keep your rotating
equipment running
longer,
dependably
and know
why
it does



**Equipment
Management
Software**

www.flowstar.net



Manage and update plant equipment data .

Not just software but a total system to maximize asset management for the highest production efficiency.

Equipment data at your fingertips

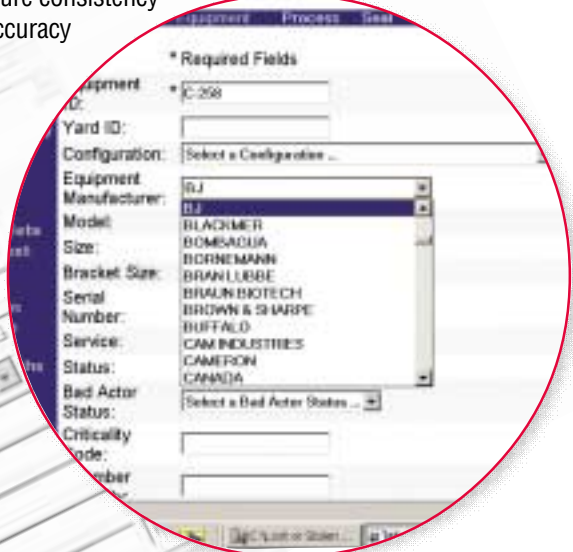
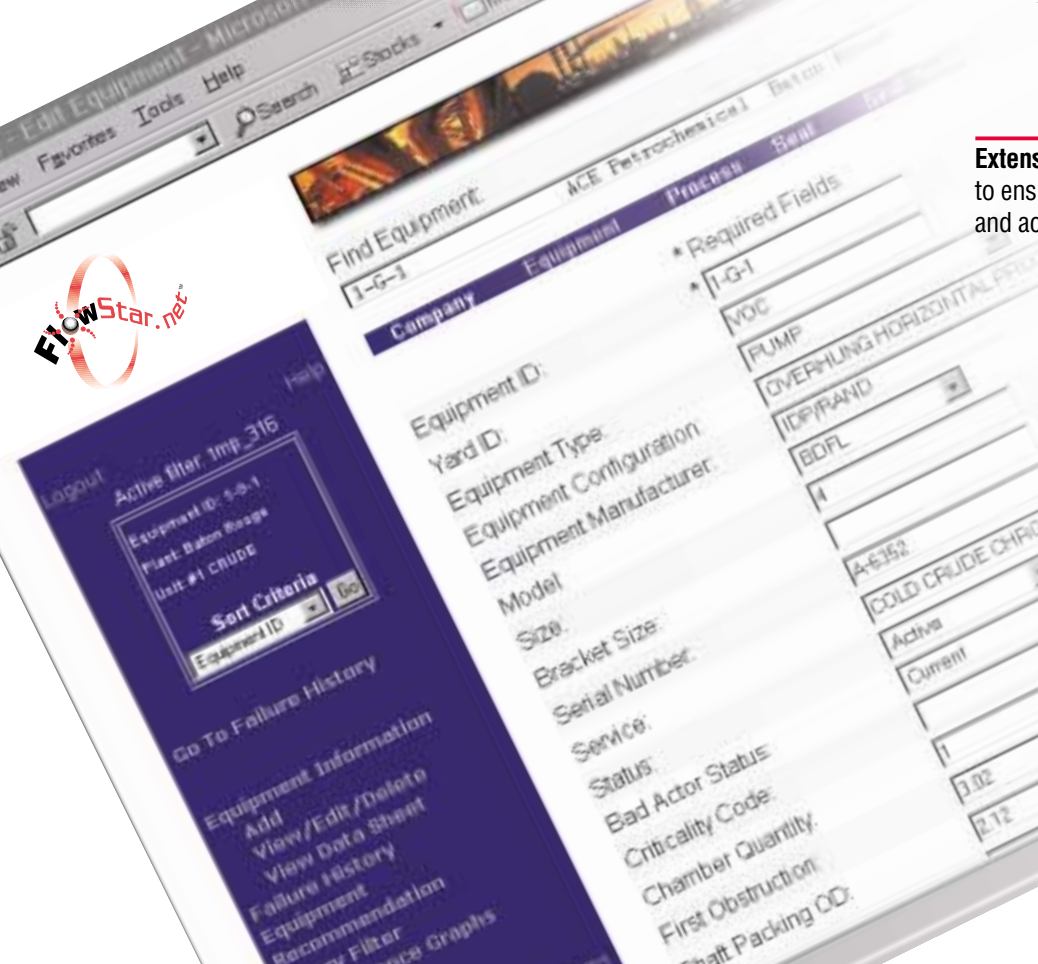
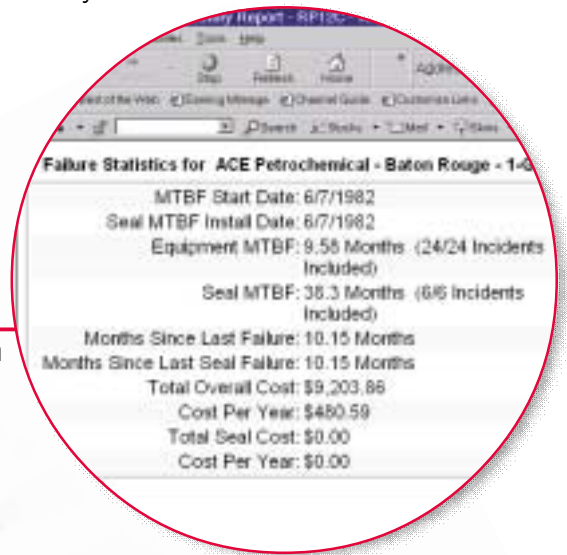
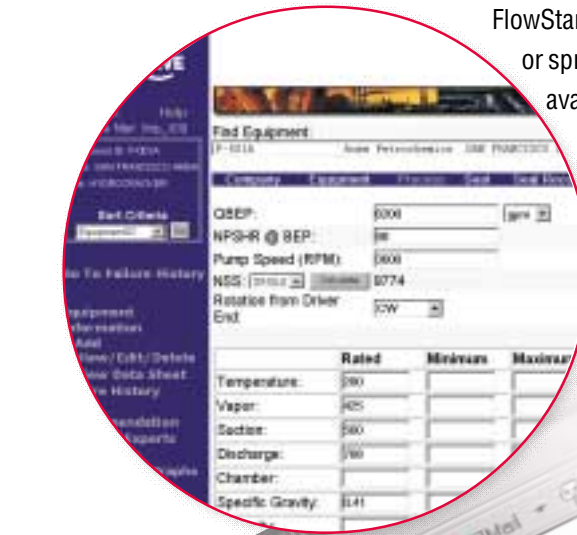
Now you can get real time access to your equipment database. Virtually unlimited filtering and sorting capabilities provide insight into conditions that affect plant performance. In collaboration with your Flowserve representative, share knowledge and resources to maximize efficiency and minimize maintenance tasks.

The integrity of your information is secure on a dedicated system. Data can be downloaded into FlowStar .net from an external source or input manually. Information can be output in form or spreadsheet format. Full email capability is readily available for reports, graphs and forms.

Calculate equipment reliability parameters such as suction specific speed

Equipment and seal Mean Time Between Repair calculations

Extensive pull down lists to ensure consistency and accuracy



...on-line ... 24 hours a day.

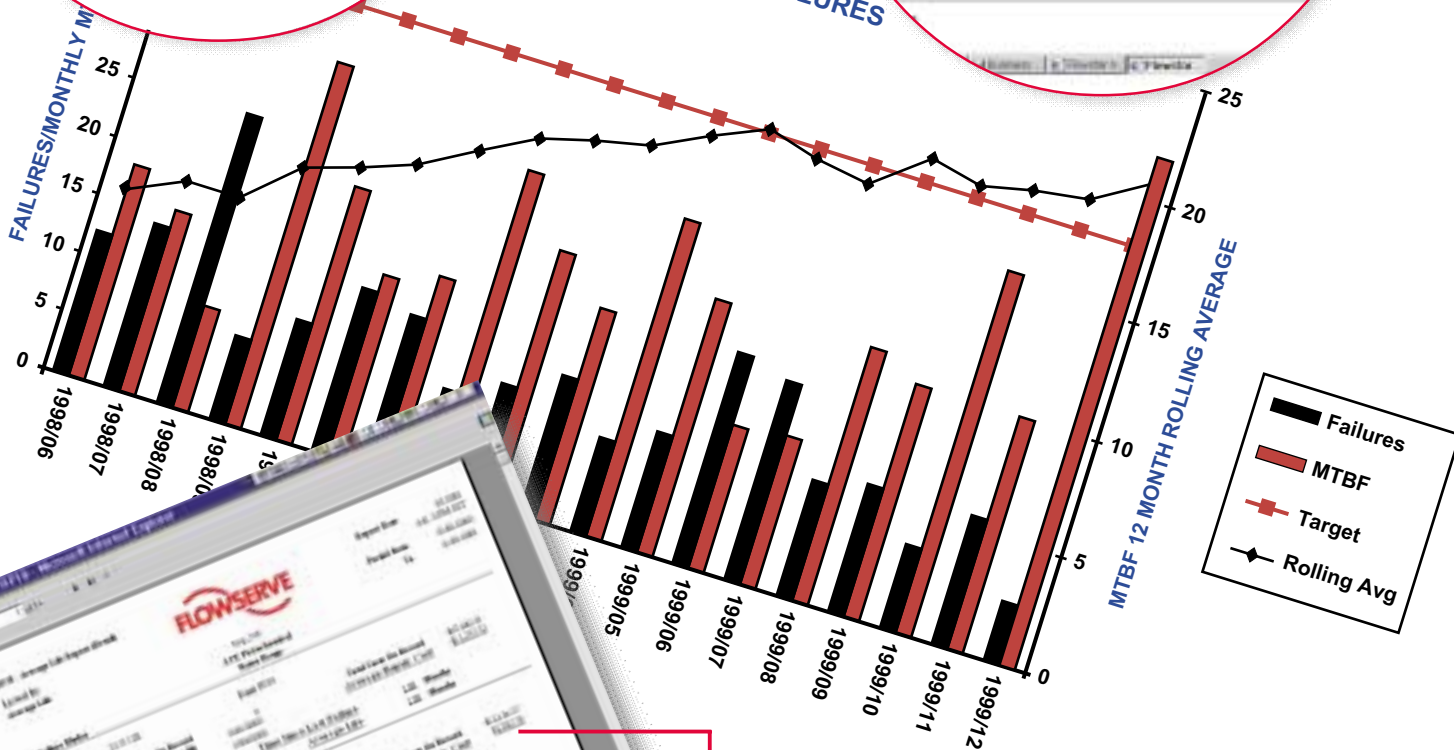
Detailed causes of failure

Failure Type	Count of Failures	Percentage of Failures
Severe	1	0.00%
Minor	4	0.00%
Medium	1	0.00%
Major	1	0.00%
Severe	1	0.00%
Minor	1	0.00%
Medium	1	0.00%
Major	1	0.00%
Severe	1	0.00%
Minor	1	0.00%
Medium	1	0.00%
Major	1	0.00%
Severe	1	0.00%
Minor	1	0.00%
Medium	1	0.00%
Major	1	0.00%

Input detailed recommendations for specific pieces of equipment

Equipment ID: [Field]
Find Equipment: [Field]
Status: [Field]
Reference: 1234567
Open Date: 01/01/1990
Close Date: [Field]
Description: (1000 character limit)
change seal flush piping plan to an API plan-11, see equipment file for a detailed drawing.

12 Month Rolling Average
MEAN TIME BETWEEN FAILURES



Bad actor/worst actor assessment using repair cycle or cost

Supporting you all the way

Flowserve offers local customer and technical support for the FlowStar .net system and access to Flowserve product and technical information in addition to global support for customer conversions. FlowStar .net includes multilingual support and real-time access to multiple customers.



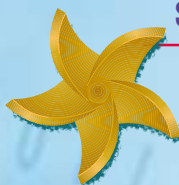


Technology



You choose the level of equipment data management you need.

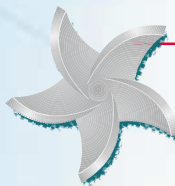
Start with the basics - the **Bronze** package



- Full access to complete equipment survey on-line including equipment details, process conditions and mechanical seal details
- Access to on-line reports which include, application reports, equipment summary reports, mechanical seal specification sheets, and seal population by manufacturer
- Standardization review
- Complete filtering capability of all fields
- Export capability of data into Excel™
- Maintained and updated by Flowserve

Excel is a registered trademark of the Microsoft Corporation

Expand your resources - the **Silver** package



- Access to all Bronze package features
- Pump recommendations reports
- Mechanical seal recommendation reports
- Full access to API piping plan schematics
- API 682 Data Sheets
- On-line current CAD drawings of all Flowserve seals currently installed within the equipment population
- Current MSDS numbers maintained for all Flowserve applications

The ultimate in equipment management - the **Gold** package



- Access to all Bronze and Silver package features
- Access to reliability information at multiple plant sites
- Export capability of all data
- Access to on-line reports which include:

Bad Actors/Worst Actors

Detailed Bad Actor reports

Detailed MTBF reports

Detailed Root Cause Failure Analysis reports

Cost Trending graphs

MTBF Trending graphs

Failure analysis history

Statistical Failure analysis

The information and specifications presented in this product brochure are believed to be accurate, but are supplied for information purposes only and should not be considered certified or as a guarantee of satisfactory results by reliance thereon. Nothing contained herein is to be construed as a warranty or guarantee, express or implied, with respect to the product. Although Flowserve Corporation can provide general application guidelines, it cannot provide specific information for all possible applications. The purchaser/user must therefore assume the ultimate responsibility for the proper selection, installation, operation and maintenance of Flowserve products. Because Flowserve Corporation is continually improving and upgrading its product design, the specifications, dimensions and information contained herein are subject to change without notice.

***For further information on FlowStar.net
contact your Flowserve representative***

www.flowstar.net

www.flowserve.com

FSD180